

**RE 20 375/07.02**

Replaces: 06.97

**Check valve  
Type S**

Nominal sizes 6 to 30

Maximum operating pressure 315 bar

Maximum flow 450 L/min



R 78\_165\*.tif

Type S.A...

**Overview of contents**

Contents	Page
Features	1
Symbols	1
Ordering details	2
Preferred types	2
Technical data	2
Characteristic curves	3
Unit dimensions	4

**Features**

- For threaded connections (internal thread)
- Leak-free closure in one direction
- Various opening pressures, optional (see ordering details)

**Symbols**

(Without spring)



© 2002  
by Bosch Rexroth AG, Industrial Hydraulics, D-97813 Lohr am Main

All rights reserved. No part of this document may be reproduced or stored, processed, duplicated or circulated using electronic systems, in any form or by any means, without the prior written authorisation of Bosch Rexroth AG. In the event of contravention of the above provisions, the contravening party is obliged to pay compensation.

This document was prepared with the greatest of care, and all statements have been examined for correctness. This document is subject to alterations for reason of the continuing further developments of products. No liability can be accepted for any incorrect or incomplete statements.

## Ordering details

S	A	.	/	*
Nominal size 6	= 6			
Nominal size 8	= 8			
Nominal size 10	= 10			
Nominal size 15	= 15			
Nominal size 20	= 20			
Nominal size 25	= 25			
Nominal size 30	= 30			
For threaded connections	= A			

Further details in clear text

0 = Revision index (defined by the factory)

0 = Without spring  
 1 = Standard  
 2 =  
 3 =  
 5 =  
 8 = (only for NS 25 and NS 30)

Opening pressure, see char. curves

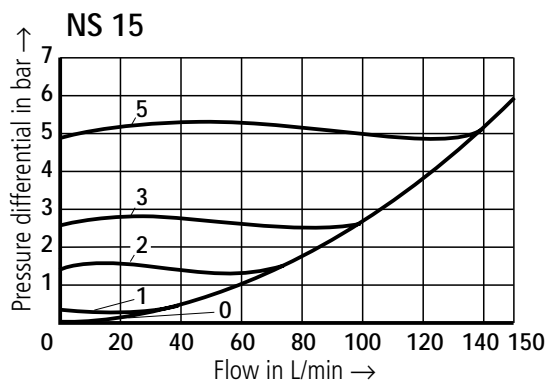
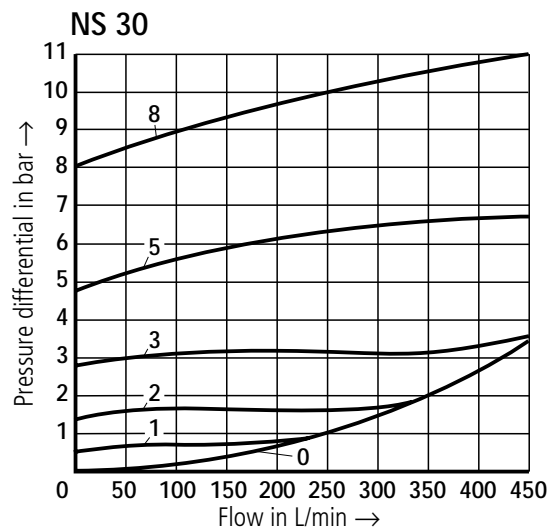
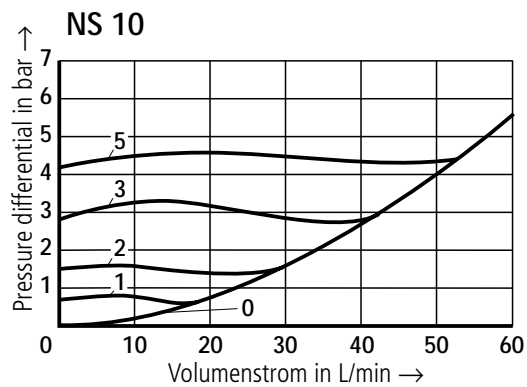
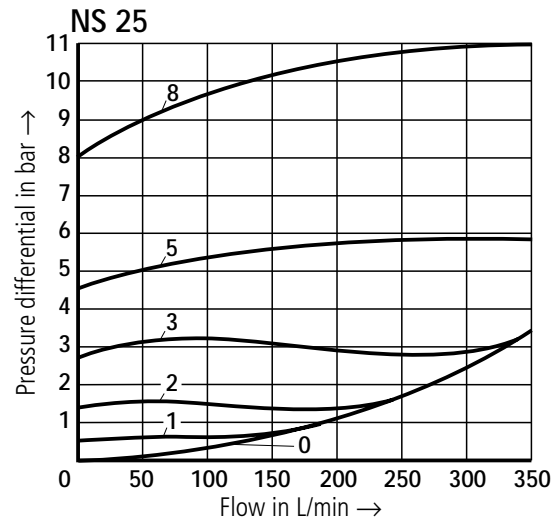
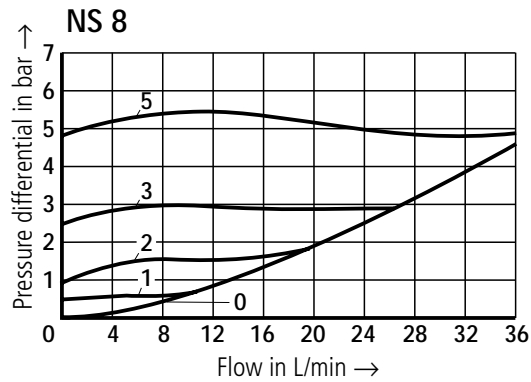
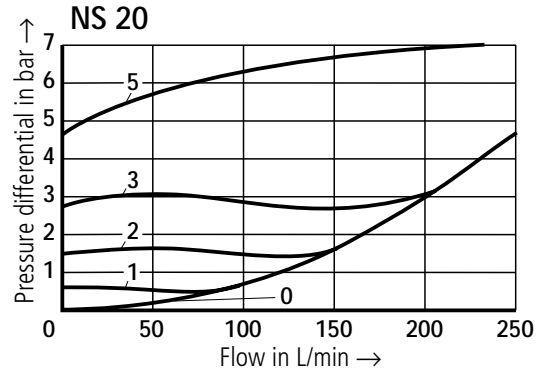
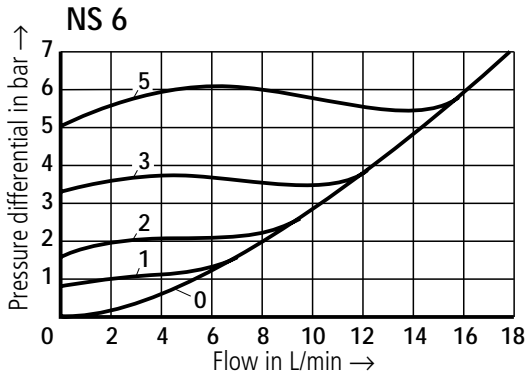
## Preferred types

Material No.	Type	Material No.	Type
00422880	S 6 A0.0/	00420521	S 15 A3.0/
00422881	S 6 A1.0/	00446477	S 15 A5.0/
00375858	S 6 A5.0/	00420524	S 20 A0.0/
00422885	S 8 A0.0/	00420525	S 20 A1.0/
00422886	S 8 A1.0/	00420528	S 20 A2.0/
00422888	S 8 A3.0/	00420529	S 20 A3.0/
00358268	S 8 A5.0/	00446369	S 20 A5.0/
00420530	S 10 A0.0/	00420511	S 25 A1.0/
00420531	S 10 A1.0/	00420515	S 25 A3.0/
00420532	S 10 A2.0/	00451778	S 25 A5.0/
00420534	S 10 A3.0/	00420517	S 30 A0.0/
00446476	S 10 A5.0/	00420519	S 30 A1.0/
00420536	S 15 A0.0/	00420502	S 30 A2.0/
00420537	S 15 A1.0/	00420504	S 30 A3.0/
00420520	S 15 A2.0/	00446709	S 30 A5.0/

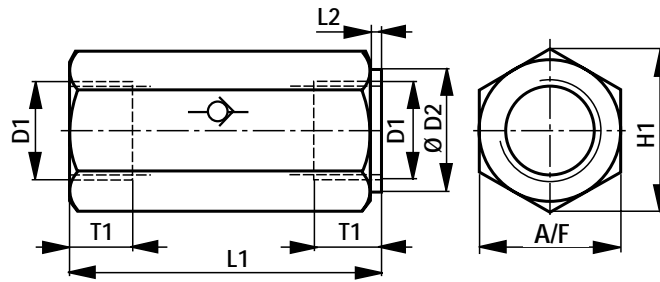
## Technical data (for applications outside these parameters, please consult us!)

Pressure fluid	Mineral oil (HL, HLP) to DIN 51 524; Fast bio-degradable pressure fluids to VDMA 24 568 (also see RE 90 221); HETG (rape seed oil); HEPG (polyglycols); HEES (synthetic ester); Other pressure fluids on request							
Pressure fluid temperature range	°C	- 30 ... + 80						
Viscosity range	mm <sup>2</sup> /s	2.8 ... 500						
Degree of contamination	Maximum permissible degree of contamination of the pressure fluid is to NAS 1638 class 9. We therefore recommend a filter with a minimum retention rate of $\beta_{10} \geq 75$ .							
Max. operating pressure	bar	315						
Opening pressure	See characteristic curves							
Max. flow	See characteristic curves							
Weight	kg	NS 6	NS 8	NS 10	NS 15	NS 20	NS 25	NS 30
		0.1	0.2	0.3	0.5	1.0	2.0	2.5

Characteristic curves (measured with HLP46,  $\vartheta_{oil} = 40 \text{ }^\circ\text{C} \pm 5 \text{ }^\circ\text{C}$ )



Pressure differential  $\Delta p$  in relation to the flow  $q_v$  at the opening pressure



Pipe thread "G" to ISO 228/1

	NS 6	NS 8	NS 10	NS 15	NS 20	NS 25	NS 30
<b>D1</b>	G 1/4	G 3/8	G 1/2	G 3/4	G 1	G 1 1/4	G 1 1/2
<b>ØD2</b>	19	24	30	36	46	60	65
<b>H1</b>	22	28	34.5	41.5	53	69	75
<b>L1</b>	58	58	72	85	98	120	132
<b>L2</b>	2	2	2	2	2	2	2
<b>T1</b>	12	12	14	16	18	20	22
<b>A/F</b>	19	24	30	36	46	60	65

**Bosch Rexroth AG**  
**Industrial Hydraulics**

D-97813 Lohr am Main  
 Zum Eisengießer 1 • D-97816 Lohr am Main  
 Telefon 0 93 52 / 18-0  
 Telefax 0 93 52 / 18-23 58 • Telex 6 89 418-0  
 eMail documentation@boschrexroth.de  
 Internet www.boschrexroth.de

**Bosch Rexroth Limited**

Cromwell Road, St Neots,  
 Cambs, PE19 2ES  
 Tel: 0 14 80/22 32 56  
 Fax: 0 14 80/21 90 52  
 E-mail: info@boschrexroth.co.uk

The data specified above only serve to describe the product. No statements concerning a certain condition or suitability for a certain application can be derived from our information. It must be remembered that our products are subject to a natural process of wear and ageing.