

Axial Piston Fixed Motor A2FM

Series 61/63

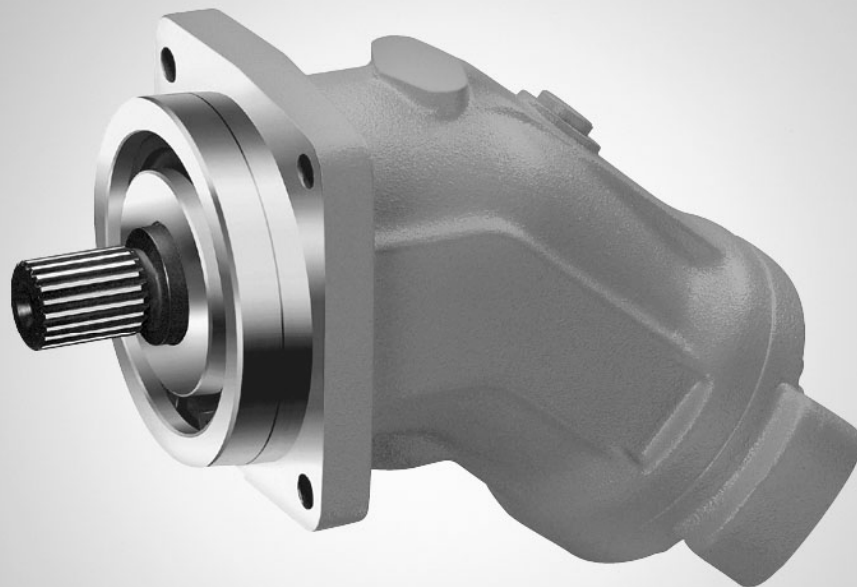
Size 10 to 200

RE 91001-RT/05.09

Replaces --

S080

Special Tool Catalogue



The data specified above only serve to describe the product. No statements concerning a certain condition or suitability for a certain application can be derived from our information. The information given does not release the user from the obligation of own judgment and verification. It must be remembered that our products are subject to a natural process of wear and aging.

© This document, as well as the data, specifications and other information set forth in it, are the exclusive property of Bosch Rexroth AG. It may not be reproduced or given to third parties without its consent.

An example configuration is shown on the title page. The delivered product may, therefore, differ from the product which is pictured.

The original instructions were created in the German language.

Content

1	General notes	4
	1.1 Duplicates.....	4
	1.2 Measuring Devices.....	4
	1.3 Pricing	4
2	Tool List	5

General notes

1 General notes



1.1 Duplicates

Each product line, A2F, A6V, etc. has its own Special Tools Catalogue.

The same tool may be used for different products and therefore appear in different Special Tool Catalogues.

Please consider this when ordering tools from these catalogues to avoid unwanted duplication of tools.



1.2 Measuring Devices.

Some Tools contained in this tool list may be considered a Measuring Device and therefore requires Calibration Control.

It is the responsibility of each Service Center to ensure these devices are registered in the QA System of their respective locations and subjected to regular calibration and marking. Each tool marked as “Measuring device” is subject to this requirement



1.3 Pricing

For pricing information please refer to RDE 90921

2 Tool List

A2FM Ferrule
Bearing Assembly

Material No.	Used for Size																Required Quantity
	10	12	16	23	28	32	45	56	63	80	90	107	125	160	180	200	
R909450409	x	x	x														1
R909450353				x	x	x											1
R909450901							x										1
R909450357								x	x								1
R909450356										x	x						1
R909450355											x	x					1
R909450354														x	x		1



A2FM Extracting/Pressing Device
Rotary Group Adjustment

Material No.	Used for Size																Required Quantity
	10	12	16	23	28	32	45	56	63	80	90	107	125	160	180	200	
R909450775	x	x	x	x	x	x	x	x	x	x	x	x	x	x	x	x	1



A2FM Threaded Insert for Extracting Device
(Required for R909450775)

	Material No.	Used for Size																Required Quantity
		10	12	16	23	28	32	45	56	63	80	90	107	125	160	180	200	
M6	R909236120	x	x														1	
M8	R909236121				x	x											1	
M10	R909451262	x	x	x	x	x	x										1	
M12	R909236122							x	x	x	x		x				1	
M16	R909236123										x	x	x	x	x	x	1	
5/8"UNC	R909451061												x	x	x	x	1	
7/16" UNC	R909451062				x	x	x	x	x	x	x	x					1	



Tool List

A2FM Assembly Tool

Shaft Seal by Press



Material No.	Used for Size																Required Quantity
	10	12	16	23	28	32	45	56	63	80	90	107	125	160	180	200	
R909452759	x	x	x														1
R909452753				x	x	x	x										1
R909452755								x	x								1
R909452756										x	x						1
R909452758												x	x				1
R909452975														x	x		1
R909452974																x	1

A2FM Measuring Device

Rotary Group Adjustment

 Measuring device



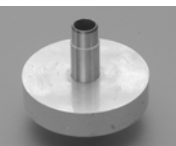
Material No..	Used for Size																Required Quantity
	10	12	16	23	28	32	45	56	63	80	90	107	125	160	180	200	
R902795831	x	x	x	x	x	x	x	x	x	x	x	x	x	x	x	x	1

Note: Gauge not included

A2FM Centering Pin

Rotary Group Adjustment

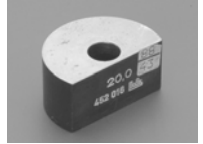
 Measuring device



Material No..	Used for Size																Required Quantity
	10	12	16	23	28	32	45	56	63	80	90	107	125	160	180	200	
R909452006	x	x	x	x	x	x	x	x	x								1

A2FM Intermediate Ring
Rotary Group Adjustment

Material No.	Used for Size																Required Quantity
	10	12	16	23	28	32	45	56	63	80	90	107	125	160	180	200	
R909452016	x	x	x	x	x	x	x	x	x								2
R902795823										x	x	x	x	x	x	x	2



A2FM Shim
Rotary Group Adjustment

Material No.	Used for Size																Required Quantity
	10	12	16	23	28	32	45	56	63	80	90	107	125	160	180	200	
R909452007	x	x	x														2
R909452008				x	x	x											2
R909452009							x	x	x								2
R902795820										x	x	x	x				2
R909083279														x	x		2



A2FM Pre-Pressing Tool
Bearing Removal

Material No.	Used for Size																Required Quantity
	10	12	16	23	28	32	45	56	63	80	90	107	125	160	180	200	
R909450913	x	x	x	x													1
R909450914					x	x											1
R909450915							x										1
R909450916								x	x								1
R909450917										x	x						1
R909450918												x	x				1



Tool List

A2FM Socket
for Integrated Check Valves



Material No.	Used for Size															Required Quantity	
	10	12	16	23	28	32	45	56	63	80	90	107	125	160	180		200
R902774028														x	x		1
R902774033					x	x	x										1
R902774007								x	x	x	x	x	x				1

Bosch Rexroth AG
Service Hydraulics
Bürgermeister-Dr.-Nebel-Straße 8
D-97816 Lohr am Main
Germany

Spare.parts@boschrexroth.de
www.boschrexroth.com
Fax: +49 9352 18-3983